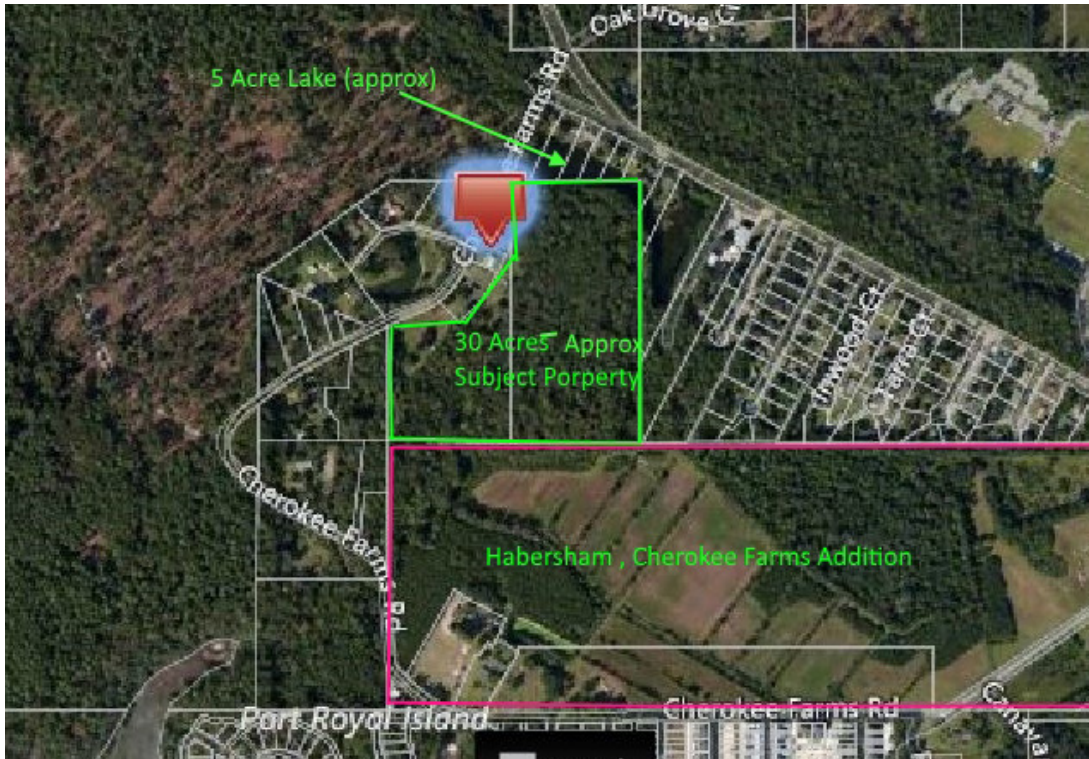


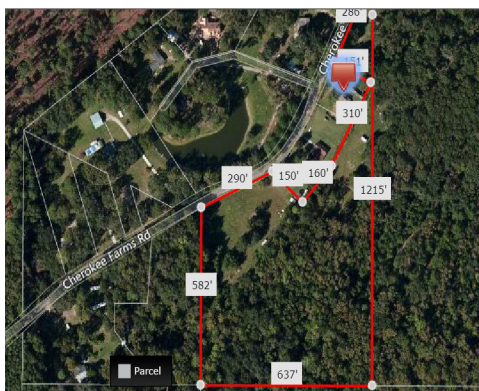
31 Cherokee Farms Road Beaufort

Offered at: \$900,000
BFTMLS# 151834

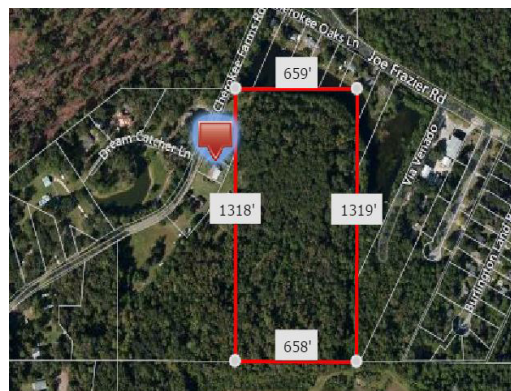
Invite us in, We'll Bring Results



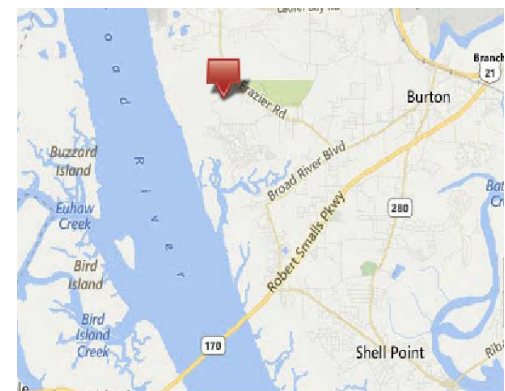
30 acres of Development Potential contiguous to the award-winning Habersham Coastal Community in Beaufort, SC. There is approximately 290' of road frontage on paved Cherokee Farms Rd and approximately 300' of pond frontage on the northern border. The entire 1,295' southern boundary of the property is conterminous with Habersham's northern boundary. Beaufort County Land Use Plan designates this property use as "Neighborhood Residential", which allows 2 units per acre. The portion of the Habersham PUD that is contiguous, has been approved for 3 units per acre, so a higher density than 2 units per acre may be possible.



Lot Dimensions



Lot Dimensions



Road Map

For photo gallery & more information please view BFTMLS# 151834



Weichert, Realtors
Coastal Properties
"Independently Owned and Operated"

Presented by Your Neighborhood Expert

David Strauss

Cell: 843-441-1113 Office: 843-379-3010

Email: DavidStrauss@WeichertCP.com

www.WeichertCP.com

The information contained in this flyer has been provided by the Seller. We believe it to be reliable, however, it should be verified by a prospective Purchaser.

