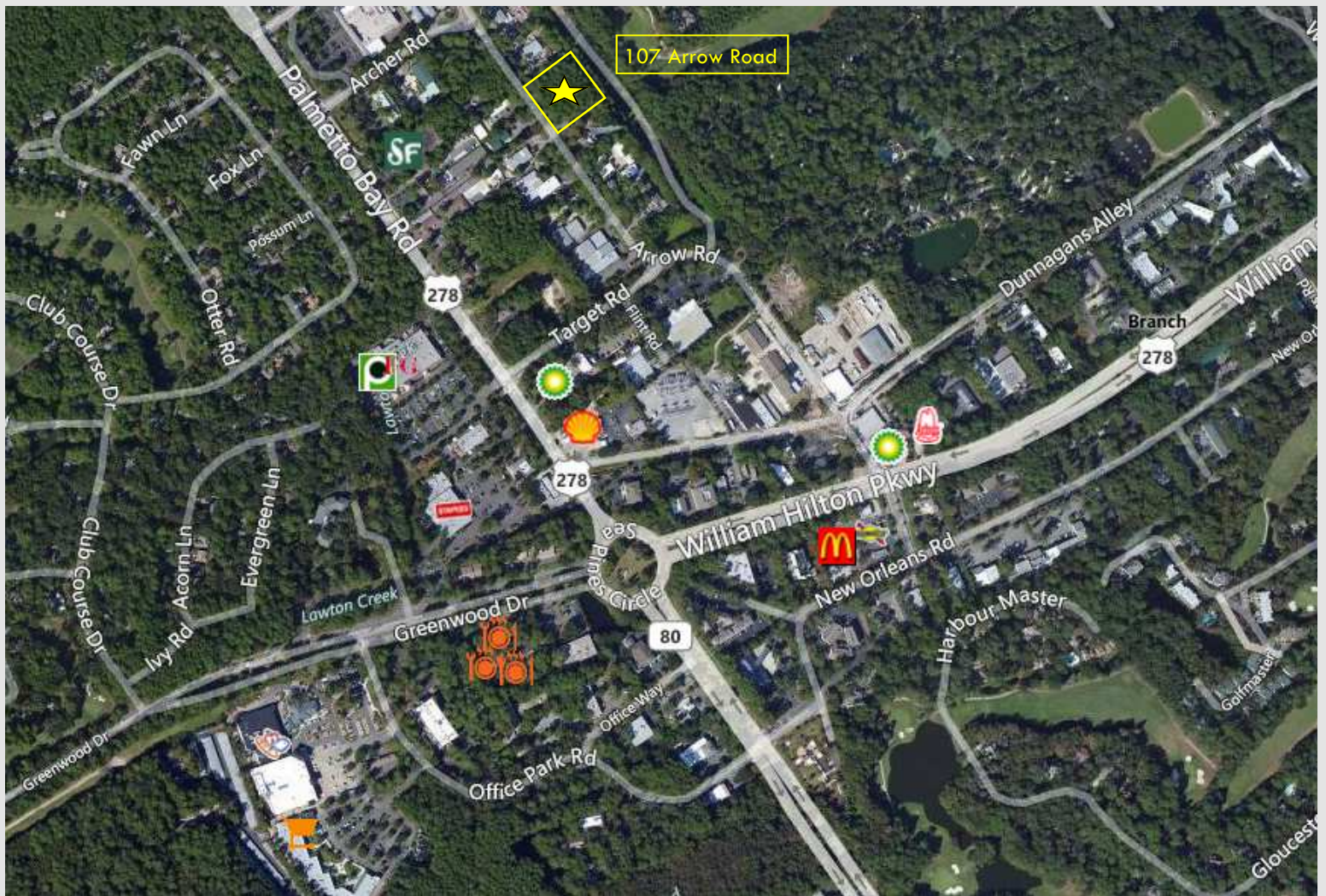


COMMERCIAL



COMMERCIAL LAND BUILD TO SUIT

- 1 Acre Buildable Lot
- 211' x 208' x 210' x 208'
- Ground Lease - Value \$400,000

107 ARROW ROAD

- Good Road Frontage
- 2013 Taxes \$4,511

08/11/2014

For details on this or other listings visit our website WRCPcommercial.com or call 843.686.6700.



Chris Cochran

Cell: (843) 338-2682

Email: ChrisCochran@WRCPCommercial.com

www.WRCPcommercial.com

**Weichert,
Realtors®**

Coastal Properties

843.686.6700